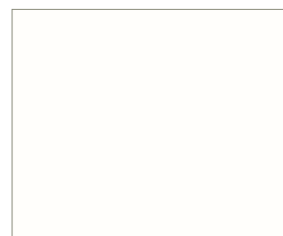
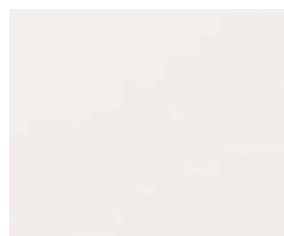


## COLORAZIONI STANDARD



WS Bianco in pasta  
(simil RAL 9016)



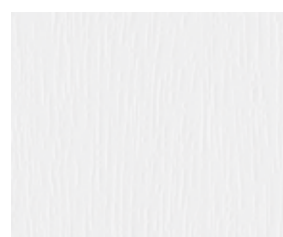
CC Avorio in pasta  
(simil RAL 9001)



AK Anteak  
9.3241 002-119500



CW Bianco Crema  
(simil RAL 9001)  
456-5054



RW Bianco Puro  
(Simil RAL 9010)  
456-5053



GO Golden Oak  
49158



NB Noce  
436-2048

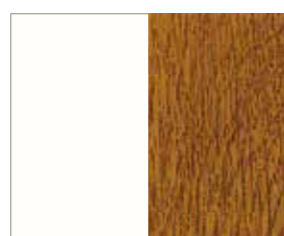


GC Rovere Sheffield Chiaro  
456-3081



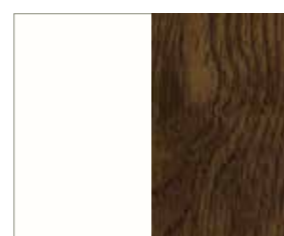
XA Winchester  
49240 BM

## BICOLORI STANDARD



**LATO INTERNO**  
WS Bianco in  
pasta  
(simil RAL  
9016)

**LATO ESTERNO**  
GO Golden  
Oak  
49158



**LATO INTERNO**  
WS Bianco in  
pasta  
(simil RAL  
9016)

**LATO ESTERNO**  
NB Noce  
436-2048



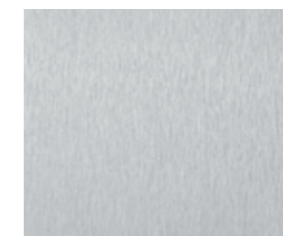
## COLORAZIONI A RICHIESTA



Pino sbiancato  
(verniciato HPVC 2-04)



Rovere sbiancato  
(verniciato HPVC 0-04)



AL Alluminio spazzolato  
436-1001



HF Avorio chiaro  
(simil RAL 1015)  
456-5056



SB Blu acciaio  
02.11.51.000033-116700  
(simil RAL 5011)



BB Blu brillante  
(simil RAL 5007)  
02.11.51.000028-116700



MB Blu monumento  
5004.05-116700



UM Blu Oltremare  
02.11.51.000026-116700  
(simil RAL 5002)



CA Canadian  
49195



MR Castagno  
02.11.81.000120-116700



CB Cioccolato  
02.11.81.000122-116700  
(simil RAL 8017)



KO Cobalto  
02.11.51.000029-116700  
(simil RAL 5013)

## COLORAZIONI A RICHIESTA



AT Grigio Agata  
02.11.71.000045-116700  
(simil RAL 7038)



GB Giallo 02.11.11.000062-  
116700 (simil RAL 1018)



DG Douglasie  
9.3152 009-116700



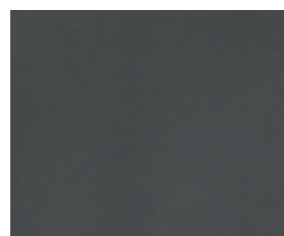
AC Grigio Agata liscio  
(simil RAL 7038)  
02.11.71.000045-116700



AG Grigio Antracite  
436-5003A  
(simil RAL 7016)



AZ Grigio antracite liscio  
(simil RAL 7016)  
436-7003A



SH Grigio Ardesia liscio  
02.11.71.000040-808300  
(simil RAL 7015)



SG Grigio argento  
(simil RAL 7001)  
02.11.71.000047-116700



SA Grigio Argento liscio  
(Simil RAL 7001)  
02.11.71.000047-808300



MS Grigio Argento  
Metallizzato  
436-1002



BG Grigio Basalto  
02.11.71.000039-116700  
(simil RAL 7012)

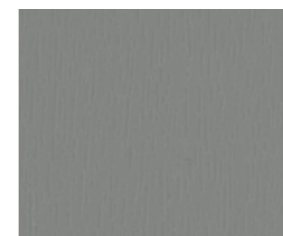


BA Grigio Basalto liscio  
02.11.71.000039-808300  
(simil RAL 7012)

## COLORAZIONI A RICHIESTA



GR Grigio Beige  
02.11.11.000040-116700  
(simil RAL 1019)



BT Grigio Calcestruzzo  
436-5038  
(simil RAL 7023)



KG Grigio Ghiaia  
436-5033  
(simil RAL 7032)



LC Grigio Luce  
02.11.71.000049-116700  
(simil RAL 7035)



LG Grigio Luce liscio  
02.11.71.000049-808300  
(simil RAL 7035)



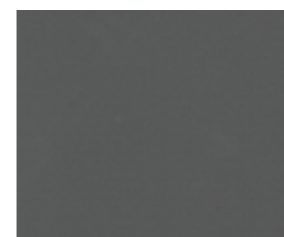
SC Grigio Nerastro liscio  
(simil RAL 7021)  
02.11.71.000042-808300



ST Grigio Pietra  
436-5045  
(simil RAL 7030)



QG Grigio quarzo  
(simil RAL 7039)  
02.11.71.000046-116700



QZ Grigio Quarzo liscio  
02.11.71.000046-808300  
(simil RAL 7039)



SK Grigio Segnale  
02.11.71.000038-116700  
(simil RAL 7004)



SI Grigio Segnale liscio  
(simil RAL 7004)  
02.11.000038-808300

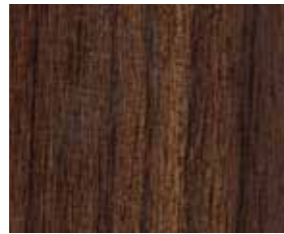


SE Grigio Seta 436-5031  
(simil RAL 7044)

## COLORAZIONI A RICHIESTA



IN Indian  
49198



MC Macorè  
9.3162 002-116700



BD Marrone decoro  
02.11.81.000101-116700



MA Mogano  
9.2097 013-116700



MT Montana  
49197



O4 Oregon  
9.1192 001-11670



BK Pino di montagna  
9.3069 041-116700



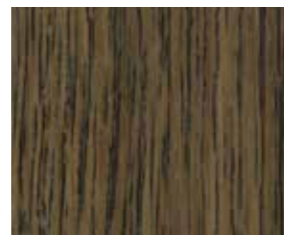
RT Rosso (simil RAL 3011)  
02.11.31.000013-116700



HR Rosso Chiaro  
02.11.31.000010-116700



WT Rosso Vino  
02.11.31.000012-116700

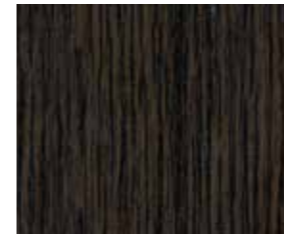


EH Rovere Chiaro  
9.3167 002-116700



EG Rovere Grigio  
9.2140 005-116700

## COLORAZIONI A RICHIESTA



ME Rovere Moro 9.2052  
089-116700



EN Rovere naturale  
9.3167.011-116700



AE Rovere Nodato  
436-3078



ED Rovere Scuro  
9.3167 004-116700



SN Siena noce  
49237



SR Siena rosso  
49233



MG Verde  
02.11.61.000013-116700  
(simil RAL 6005)



HG Verde chiaro  
02.11.61.000014-116700  
(simil RAL 6001)



MO Verde monumento  
9925.05-116700



GN Verde muschio  
(simil RAL 6009)  
436-5021